

KMtronic LTD

USB Four Channels Relay



A general purpose Relay board for connection to a PC's USB port using VCP (Virtual COM port). Control devices using your PC. USB Relay controller allows a PC to control external devices using simple RS232 commands. Relay is fully powered from the USB bus.

Manufacturer:

KMtronic LTD

Features:

- Fully assembled and tested
- Fully powered from USB
- For 12V/24VDC 15A or 120V/220V AC at 10A max.
- Can be used with LabVIEW, ProfiLab, DAQFactory, TestPoint, DASyLab, VEE

USB to serial interface:

FTDI FT232RL Chip

www.ftdichip.com/Products/ICs/FT232R.htm

Complete including:

One USB relay board

Dimensions:

76 mm / 59 mm

Relay specifications:

Relays have Normally Open (NO) and Normally Closed (NC) Contacts each capable of switching max:

- 12VDC/15A
- 24VDC/15A
- 125VAC/15A
- 250VAC/10A

Relay datasheet:

www.kmtronic.com/manuals/RAS.pdf

Supply:

Fully powered from USB

Operation Range:

0°C to +80°C

Drivers :

All Windows systems, Windows RT, Linux, Mac OS 8, Mac OS 9, Mac OS X, Android, Raspberry Pi, Arduino ADK, Arduino with USB Host Shield...

www.ftdichip.com/FTDrivers.htm

Communication Parameters:

8 Data, 1 Stop, No Parity

Baud rate : 9600

Commands:

FIRST chanel commands:

OFF command : FF 01 00 (HEX) or 255 1 0 (DEC)

ON command : FF 01 01 (HEX) or 255 1 1 (DEC)

SECOND chanel commands:

OFF command : FF 02 00 (HEX) or 255 2 0 (DEC)

ON command : FF 02 01 (HEX) or 255 2 1 (DEC)

THIRD chanel commands:

OFF command : FF 03 00 (HEX) or 255 3 0 (DEC)

ON command : FF 03 01 (HEX) or 255 3 1 (DEC)

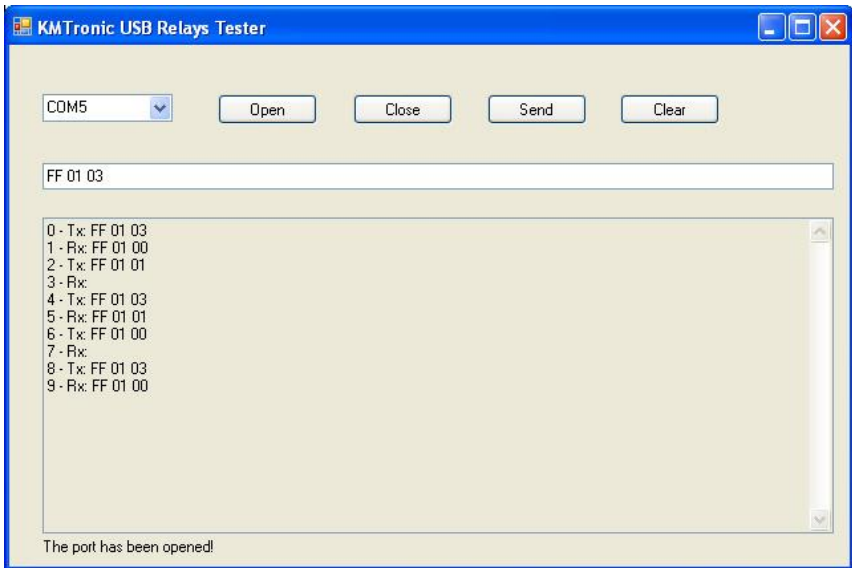
FOURTH chanel commands:

OFF command : FF 04 00 (HEX) or 255 4 0 (DEC)

ON command : FF 04 01 (HEX) or 255 4 1 (DEC)

Windows Test software:

www.kmtronic.com/kmtronic-usb-relay-test-software.html

**Customers projects:**

www.kmtronic.com/kmtronic-customers-projects.html

Software Examples:

www.kmtronic.com/usb-rs232-rs485-relays.html

www.KMtronic.com